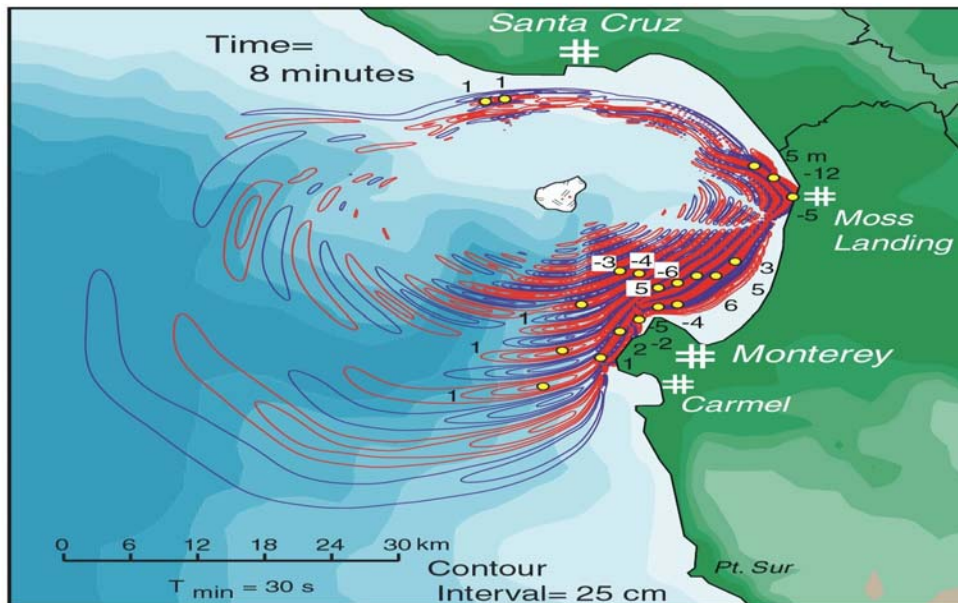


TSUNAMI BASICS:

MONTEREY BAY FOCUS



COMMUNITY MEETING

WHEN: MAY 4TH, 2011 7:00-9:00PM

WHERE: CIVIC PLAZA COMMUNITY ROOM
4TH FLOOR

275 MAIN ST., WATSONVILLE, CA

All County residents are invited to hear Tom Evans, Warning Coordination Meteorologist from the National Weather Services; Rick Wilson, Senior Engineering Geologist from the California Geological Survey; and Kevin Miller, Program Representative from the California Emergency Agency.

VIEW THE LATEST INUNDATION AREA MAPS FOR YOUR
NEIGHBORHOOD!

Sponsored by the Tsunami Ready Program of Santa Cruz County of Santa Cruz
For more information call: 454-4733